



- ✓ High reliability, efficiency & productivity
- ✓ Compact, small footprint
- ✓ Operator friendly:
 - ✓ Ergonomic design of the magazine allows easy loading of blanks
 - ✓ Linear adjustment wheels, counters and setup list make it easy to carry out adjustments



TRAY INFEED

Incoming trays are taken over with the stacking edges in open position. In case of multiple trays coming in, a mechanical separation lets the first tray into the folding machine.



STACKING EDGE CLOSING

During transport into the machine, hot melt will be applied on the stacking edges and/or tray side. After the tray is in position the stacking edges are folded and glued.



ADJUSTABLE FORMING UNIT

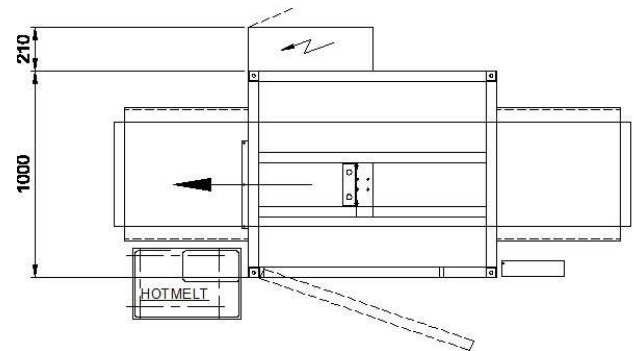
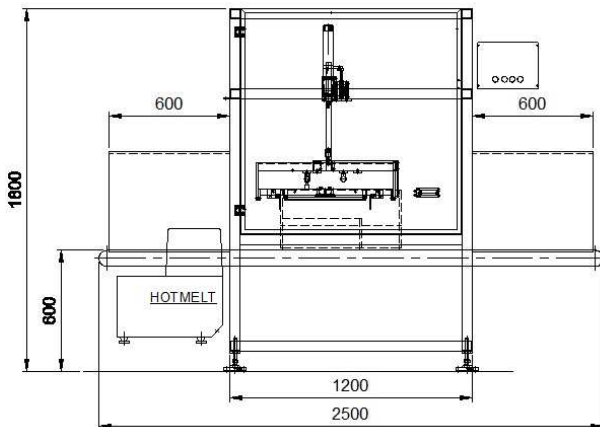
The folding unit is adjustable in length and width and can be adjusted to the correct tray size. The adjustments are done by hand wheels and can easily be read from counters and measuring scales.



FLEXIBLE TO HANDLE DIFFERENT TRAY FORMATS

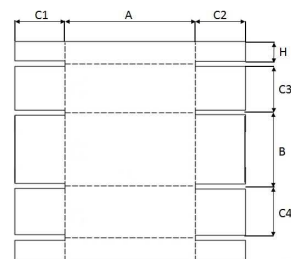
Modular machine configuration to handle tray formats and shapes that meet your operational needs.

Technical Specifications



Tray dimensions

	Minimum	Maximum
Tray Length outer (A)	200 mm	600 mm
Tray Width outer (B)	200 mm	400 mm
Tray Height outer (C1, C)	40 mm	100 mm
Tray Height outer (C3, C4)	40 mm	100 mm
Stacking Edge Height (H)	45 mm	70 mm



Tray quality

Corrugation B-wave, C-wave, E-wave

Capacity

Maximum 20 trays per minute

Tray closure

Hotmelt

Air & power

Electrical connection : 3 x 400 V - 50Hz - N-earthed
 Air pressure : 6 bar
 Compressed air connection : ½"

Machine dimensions

Machine length : 2500 mm
 Machine width : 1210 mm
 Machine height : 1800 mm ± 30mm
 Out feed height : 600 mm ± 30mm

Operation temperature

The machine is suitable for operation in a dry environment at a temperature between +3°C and +40°C